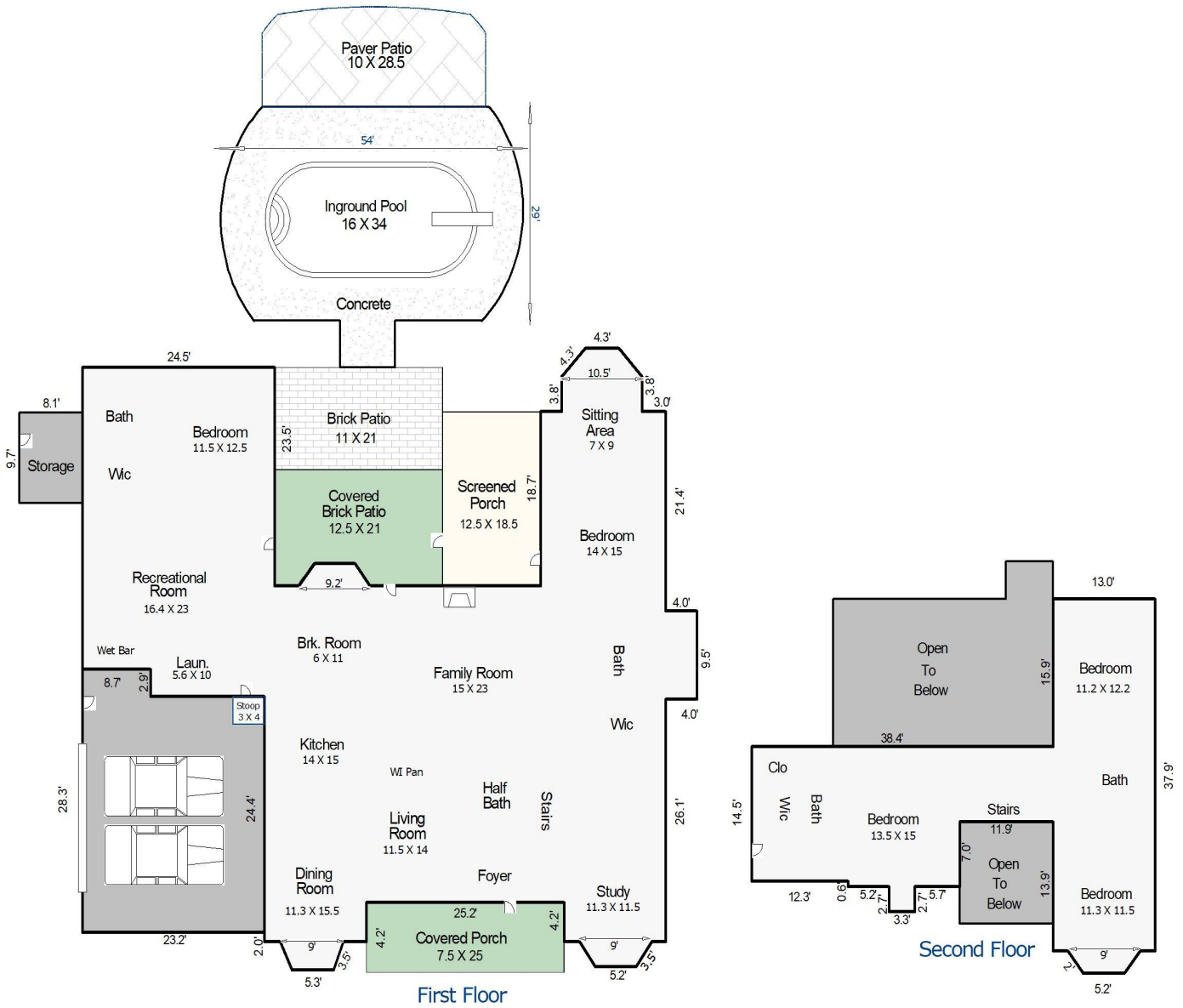




309 Stonebrook Farm Way, Greenville, SC 29615



Sketch by Apex Sketch v6 Standard™

Comments:

AREA CALCULATIONS SUMMARY			
Code	Description	Net Size	Net Totals
GLA1	First Floor	3137.33	3137.33
GLA2	Second Floor	1008.05	1008.05
GAR	Two Car Garage	614.51	614.51
P/P	Covered Porch	189.00	
	Screened Porch	233.75	
	Covered Brick Patio	251.47	
	Brick Patio	236.50	
	Stoop	12.00	
	Paver Patio	294.48	1217.20
OTH	Storage	78.57	78.57
Net LIVABLE Area		(rounded)	4145

LIVING AREA BREAKDOWN			
Breakdown			Subtotals
First Floor			
	78.4	x 6.3	493.92
	2.9	x 69.7	202.13
	2.7	x 74.4	200.88
	0.3	x 55.2	16.56
	3.8	x 10.3	39.14
	18.7	x 16.0	299.20
0.5	x 1.9	x 2.4	2.28
	23.5	x 24.5	575.75
0.5	x 1.5	x 3.1	2.33
	4.2	x 13.0	54.60
	4.2	x 13.0	54.60
	21.9	x 51.2	1121.28
0.5	x 3.0	x 3.0	4.50
	5.2	x 2.4	12.48
	5.3	x 3.1	16.43
0.5	x 2.0	x 2.7	2.70
	4.3	x 3.0	12.90
0.5	x 2.4	x 2.0	2.40
0.5	x 3.1	x 1.3	2.02
	5.2	x 2.7	14.04
0.5	x 3.0	x 3.0	4.50
0.5	x 2.7	x 2.0	2.70
9			1008.05
31 Items	(rounded)		4145