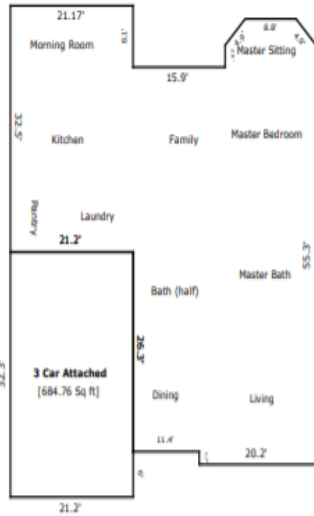


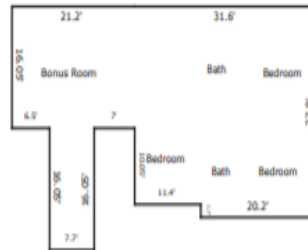


GRIFFIN

FINE REAL ESTATE



First Floor
[2413.33 Sq Ft]



Second Floor
[1322.94 Sq Ft]

TOTAL Sketch by a la mode, Inc.

Area Calculations Summary

Living Area		Calculation Details	
First Floor	2413.33 Sq Ft	32.5 x 21.17	= 688.04
		20.2 x 1.7	= 34.34
		31.6 x 26.3	= 831.08
		31.63 x 24.4	= 771.76
		15.73 x 2.9	= 45.62
		8.8 x 3.46	= 30.49
		0.5 x 3.46 x 3.46	= 6
		0.5 x 3.46 x 3.46	= 6
Second Floor	1322.94 Sq Ft	7.7 x 16.05	= 123.58
		16.05 x 21.2	= 340.26
		31.6 x 26.1	= 824.76
		1.7 x 20.2	= 34.34
Total Living Area (Rounded):	3736 Sq ft		
Non-living Area			
3 Car Attached	684.76 Sq ft	32.3 x 21.2	= 684.76