

*For Sale* | BRAXTON RIDGE in SIMPSONVILLE, SC 29681



## 501 Rustic Outland Drive by GALLOWAY Custom HOMES

*T*A spacious and convenient corner lot in the popular and highly sought after subdivision of Braxton Ridge accommodates a side-entry attached garage and allows ample space should you decide to add a pool which can be priced upon request. The brick and hardboard siding exterior and stately entry porch, flanked by flickering lanterns, beckon you inside to discover a welcoming and open concept living space. You'll be delighted to find not just one, but two bedroom suites, including the master, located on the main level. The large master suite is tucked away on one side of the house to ensure privacy for the owners.

*(For more details, please visit our website.)*

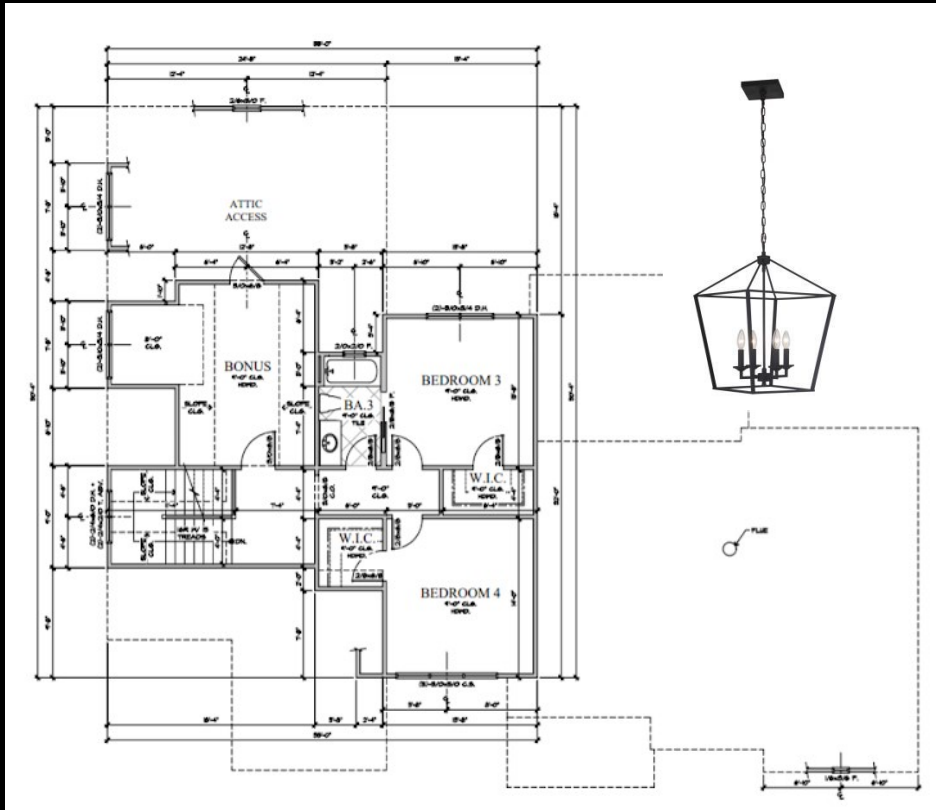
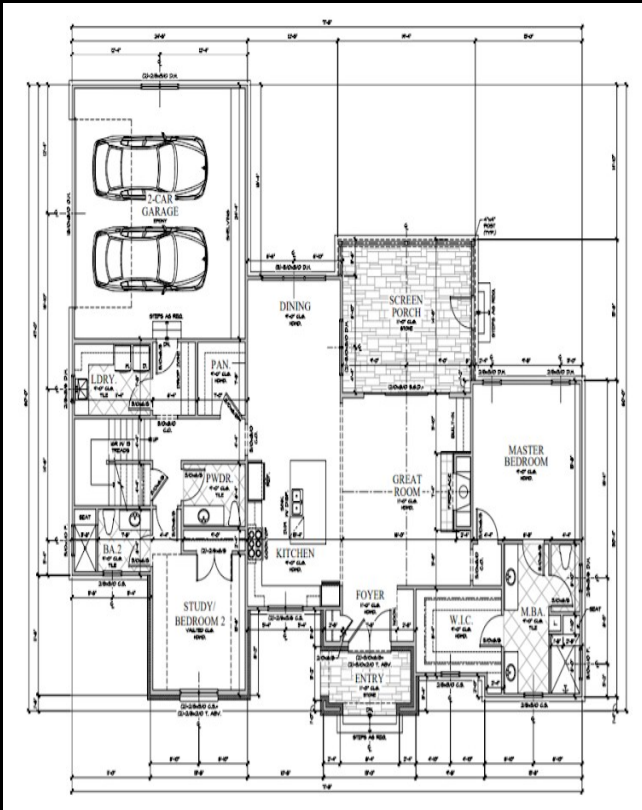


*4 BR / 3.5 BA Modern  
Craftsman in Braxton Ridge  
Master BR Suite + Additional  
Bedroom Suite on Main Level  
Elegant Great Room with  
Vaulted Ceiling & Fireplace  
Cedar Beams, Shiplap Accents  
Designer Lighting & Fixtures*

*Granite & Stainless  
Gourmet Kitchen with  
Large Breakfast Room,  
Walk-In Pantry  
Expansive Bonus Room  
Screened Porch. Patio  
Room for Pool (not included)  
Side Entry Garage*

  
**GRIFFIN**  
FINE REAL ESTATE

*Call to view* | 864.607.0751



*Presented by* | **ALEX GALLOWAY**

SALES ASSOCIATE | REALTOR®

864.607.0751 M

864.844.8309 O

alex@griffinfinerealestate.com

107 SUNBELT CIRCLE, STE 4, GREER, SC 29650

[www.griffinfinerealestate.com](http://www.griffinfinerealestate.com)

